



Einspeiseklemmen

Seite 61



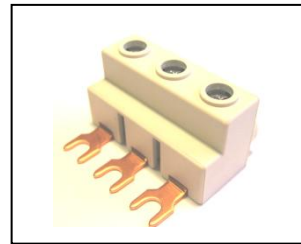
Messing-Einspeiseklemmen

Seite 67



Einspeiseklemme 3-fach

Seite 67



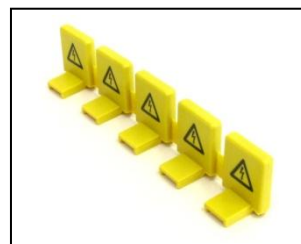
Einspeiseklemme Motorschutzschalter

Seite 60



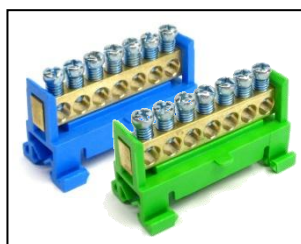
Berührungsschutz
Motorschutzschalter

Seite 60



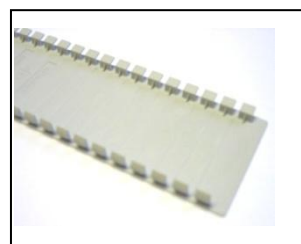
Berührungsschutz LS-Schalter

Seite 68



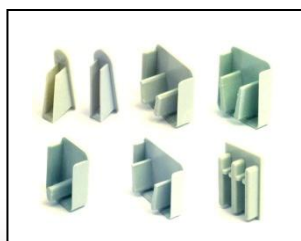
N- und PE Klemmenblock

Seite 71



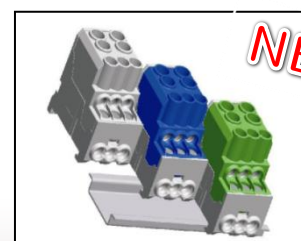
Verteilerabdeckstreifen

Seite 72



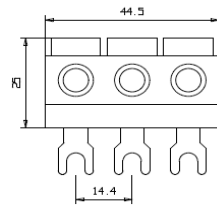
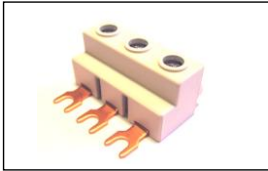
Endkappen

Seite 69



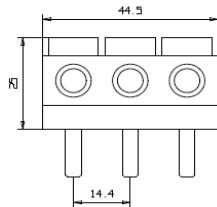
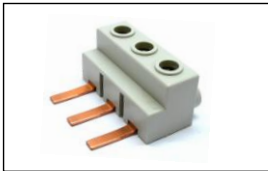
Verteilerklemmen

Seite 71



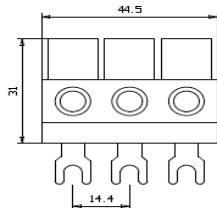
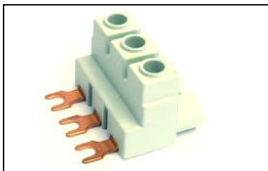
Einspeiseblock für Motorschutzschalter, Gabel

Artikel-Nr. Art.-no N° article	Farbe Colour Couleur	GTIN-Code 4046931...	(Anschluss) Querschnitt (Connecting)Cross section Coupe transversale	Phasen Phase Phase	VPE Pack. Emballage	Cu/CuZn Zahl Cu/CuZn Code Cu/CuZn Codé
		[GTIN-13]	[Cu / mm ²]	[1...4]	[Unit]	[kg]
01.116.100		023929	3 x 25	3	10	0,025



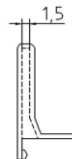
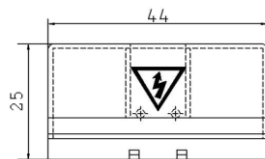
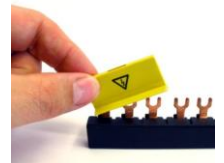
Einspeiseblock für Motorschutzschalter, Stift

Artikel-Nr. Art.-no N° article	Farbe Colour Couleur	GTIN-Code 4046931...	(Anschluss) Querschnitt (Connecting)Cross section Coupe transversale	Phasen Phase Phase	VPE Pack. Emballage	Cu/CuZn Zahl Cu/CuZn Code Cu/CuZn Codé
		[GTIN-13]	[Cu / mm ²]	[1...4]	[Unit]	[kg]
02.116.100		023936	3 x 25	3	10	0,025

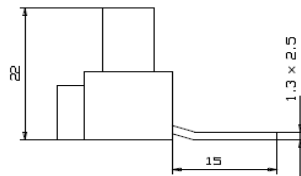


Einspeiseblock für Motorschutzschalter nach UL 508

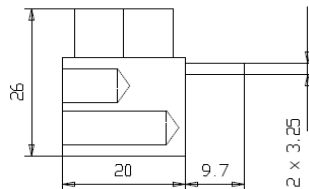
Artikel-Nr. Art.-no N° article	Farbe Colour Couleur	GTIN-Code 4046931...	(Anschluss) Querschnitt (Connecting)Cross section Coupe transversale	Phasen Phase Phase	VPE Pack. Emballage	Cu/CuZn Zahl Cu/CuZn Code Cu/CuZn Codé
		[GTIN-13]	[Cu / mm ²]	[1...4]	[Unit]	[kg]
01.115.100		023943	3 x 25	3	10	0,025

Berührungsschutzkappe
für Drehstromschienenblöcke

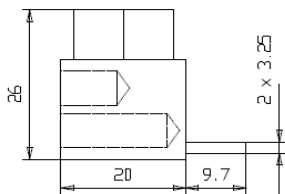
Artikel-Nr. Art.-no N° article	Farbe Colour Couleur	GTIN-Code 4046931...	(Anschluss) Querschnitt (Connecting)Cross section Coupe transversale	Phasen Phase Phase	VPE Pack. Emballage	Cu/CuZn Zahl Cu/CuZn Code Cu/CuZn Codé
		[GTIN-13]	[Cu / mm ²]	[1...4]	[Unit]	[kg]
01.001.401		023950	---	3	10	---

Einspeiseklemme 10mm², Stift

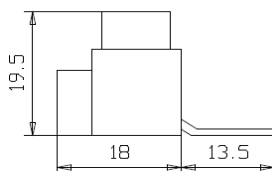
Artikel-Nr. Art.-no N° article	Farbe Colour Couleur	GTIN-Code 4046931...	(Anschluss) Querschnitt (Connecting)Cross section Coupe transversale	Phasen Phase Phase	VPE Pack. Emballage	Cu/CuZn Zahl Cu/CuZn Code Cu/CuZn Codé
		[GTIN-13]	[Cu / mm ²]	[1...4]	[Unit]	[kg]
60.005.100		220724	10	1	10	0,016

Einspeiseklemme 2 x 10mm², Stift

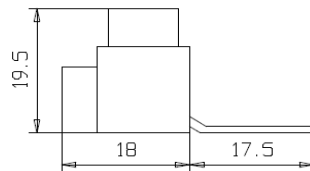
Artikel-Nr. Art.-no N° article	Farbe Colour Couleur	GTIN-Code 4046931...	(Anschluss) Querschnitt (Connecting)Cross section Coupe transversale	Phasen Phase Phase	VPE Pack. Emballage	Cu/CuZn Zahl Cu/CuZn Code Cu/CuZn Codé
		[GTIN-13]	[Cu / mm ²]	[1...4]	[Unit]	[kg]
60.020.100		220731	2 x 10	1	10	0,018

Einspeiseklemme 2 x 10mm², Stift

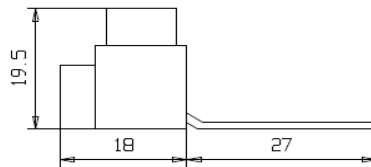
Artikel-Nr. Art.-no N° article	Farbe Colour Couleur	GTIN-Code 4046931...	(Anschluss) Querschnitt (Connecting)Cross section Coupe transversale	Phasen Phase Phase	VPE Pack. Emballage	Cu/CuZn Zahl Cu/CuZn Code Cu/CuZn Codé
		[GTIN-13]	[Cu / mm ²]	[1...4]	[Unit]	[kg]
60.021.100		220748	2 x 10	1	10	0,018

Einspeiseklemme 25mm², Stift

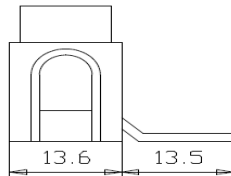
Artikel-Nr. Art.-no N° article	Farbe Colour Couleur	GTIN-Code 4046931...	(Anschluss) Querschnitt (Connecting)Cross section Coupe transversale	Phasen Phase Phase	VPE Pack. Emballage	Cu/CuZn Zahl Cu/CuZn Code Cu/CuZn Codé
		[GTIN-13]	[Cu / mm ²]	[1...4]	[Unit]	[kg]
60.001.100		220755	25	1	10	0,017

Einspeiseklemme 25mm², Stift

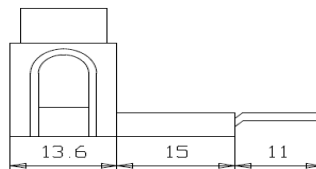
Artikel-Nr. Art.-no N° article	Farbe Colour Couleur	GTIN-Code 4046931...	(Anschluss) Querschnitt (Connecting)Cross section Coupe transversale	Phasen Phase Phase	VPE Pack. Emballage	Cu/CuZn Zahl Cu/CuZn Code Cu/CuZn Codé
		[GTIN-13]	[Cu / mm ²]	[1...4]	[Unit]	[kg]
60.004.100		220762	25	1	10	0,017

Einspeiseklemme 25mm², Stift

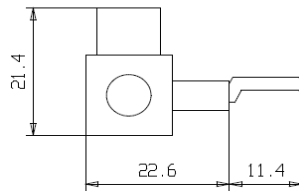
Artikel-Nr. Art.-no N° article	Farbe Colour Couleur	GTIN-Code 4046931...	(Anschluss) Querschnitt (Connecting)Cross section Coupe transversale	Phasen Phase Phase	VPE Pack. Emballage	Cu/CuZn Zahl Cu/CuZn Code Cu/CuZn Codé
		[GTIN-13]	[Cu / mm ²]	[1...4]	[Unit]	[kg]
60.003.100		220779	25	1	10	0,019

Einspeiseklemme 25mm², Stift, kurz

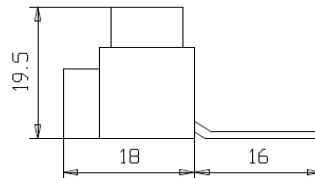
Artikel-Nr. Art.-no N° article	Farbe Colour Couleur	GTIN-Code 4046931...	(Anschluss) Querschnitt (Connecting)Cross section Coupe transversale	Phasen Phase Phase	VPE Pack. Emballage	Cu/CuZn Zahl Cu/CuZn Code Cu/CuZn Codé
		[GTIN-13]	[Cu / mm ²]	[1...4]	[Unit]	[kg]
EK60.015.100		220786	25	1	10	0,023

Einspeiseklemme 25mm², Stift, lang

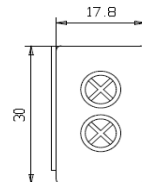
Artikel-Nr. Art.-no N° article	Farbe Colour Couleur	GTIN-Code 4046931...	(Anschluss) Querschnitt (Connecting)Cross section Coupe transversale	Phasen Phase Phase	VPE Pack. Emballage	Cu/CuZn Zahl Cu/CuZn Code Cu/CuZn Codé
		[GTIN-13]	[Cu / mm ²]	[1...4]	[Unit]	[kg]
EK60.014.100		220793	25	1	10	0,030

Einspeiseklemme 25mm², Stift

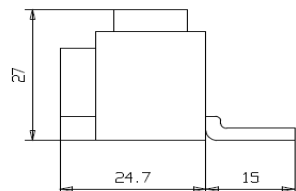
Artikel-Nr. Art.-no N° article	Farbe Colour Couleur	GTIN-Code 4046931...	(Anschluss) Querschnitt (Connecting)Cross section Coupe transversale	Phasen Phase Phase	VPE Pack. Emballage	Cu/CuZn Zahl Cu/CuZn Code Cu/CuZn Codé
		[GTIN-13]	[Cu / mm ²]	[1...4]	[Unit]	[kg]
60.008.100	■	220809	25	1	10	0,010

Einspeiseklemme 25mm², Gabel

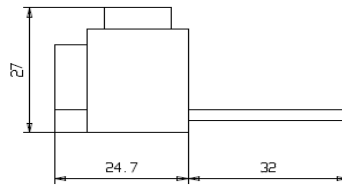
Artikel-Nr. Art.-no N° article	Farbe Colour Couleur	GTIN-Code 4046931...	(Anschluss) Querschnitt (Connecting)Cross section Coupe transversale	Phasen Phase Phase	VPE Pack. Emballage	Cu/CuZn Zahl Cu/CuZn Code Cu/CuZn Codé
		[GTIN-13]	[Cu / mm ²]	[1...4]	[Unit]	[kg]
50.002.100	■	220816	25	1	10	0,016

Einspeiseklemme 35mm², Stift und Gabel, anreihbar

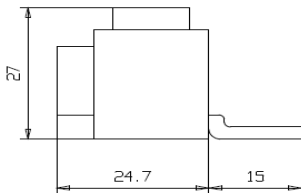
Artikel-Nr. Art.-no N° article	Farbe Colour Couleur	GTIN-Code 4046931...	(Anschluss) Querschnitt (Connecting)Cross section Coupe transversale	Phasen Phase Phase	VPE Pack. Emballage	Cu/CuZn Zahl Cu/CuZn Code Cu/CuZn Codé
		[GTIN-13]	[Cu / mm ²]	[1...4]	[Unit]	[kg]
50.006.100	■	220823	35	1 - 4	10	0,020

Einspeiseklemme 50mm², Gabel

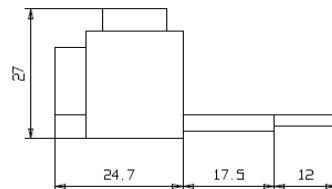
Artikel-Nr. Art.-no N° article	Farbe Colour Couleur	GTIN-Code 4046931...	(Anschluss) Querschnitt (Connecting)Cross section Coupe transversale	Phasen Phase Phase	VPE Pack. Emballage	Cu/CuZn Zahl Cu/CuZn Code Cu/CuZn Codé
		[GTIN-13]	[Cu / mm ²]	[1...4]	[Unit]	[kg]
50.011-V15.100	■	220885	50	1	3	0,022

Einspeiseklemme 50mm², Gabel

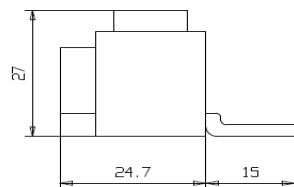
Artikel-Nr. Art.-no N° article	Farbe Colour Couleur	GTIN-Code 4046931...	(Anschluss) Querschnitt (Connecting)Cross section Coupe transversale	Phasen Phase Phase	VPE Pack. Emballage	Cu/CuZn Zahl Cu/CuZn Code Cu/CuZn Codé
		[GTIN-13]	[Cu / mm ²]	[1...4]	[Unit]	[kg]
50.011-V29.100	■	220892	50	1	3	0,032

Einspeiseklemme 50mm², Stift

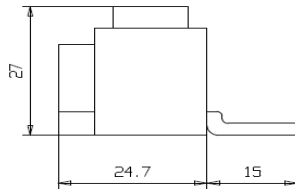
Artikel-Nr. Art.-no N° article	Farbe Colour Couleur	GTIN-Code 4046931...	(Anschluss) Querschnitt (Connecting)Cross section Coupe transversale	Phasen Phase Phase	VPE Pack. Emballage	Cu/CuZn Zahl Cu/CuZn Code Cu/CuZn Codé
		[GTIN-13]	[Cu / mm ²]	[1...4]	[Unit]	[kg]
60.011-V15.100	■	220908	50	1	3	0,022

Einspeiseklemme 50mm², Stift

Artikel-Nr. Art.-no N° article	Farbe Colour Couleur	GTIN-Code 4046931...	(Anschluss) Querschnitt (Connecting)Cross section Coupe transversale	Phasen Phase Phase	VPE Pack. Emballage	Cu/CuZn Zahl Cu/CuZn Code Cu/CuZn Codé
		[GTIN-13]	[Cu / mm ²]	[1...4]	[Unit]	[kg]
60.011-VB29,5.100	■	220915	50	1	3	0,032

Einspeiseklemme 50mm², Gabel

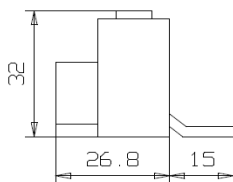
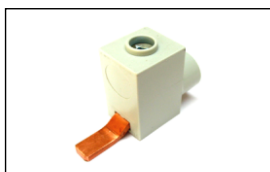
Artikel-Nr. Art.-no N° article	Farbe Colour Couleur	GTIN-Code 4046931...	(Anschluss) Querschnitt (Connecting)Cross section Coupe transversale	Phasen Phase Phase	VPE Pack. Emballage	Cu/CuZn Zahl Cu/CuZn Code Cu/CuZn Codé
		[GTIN-13]	[Cu / mm ²]	[1...4]	[Unit]	[kg]
50.011-U15.100	■	220922	50	1	3	0,022

Einspeiseklemme 50mm², Stift

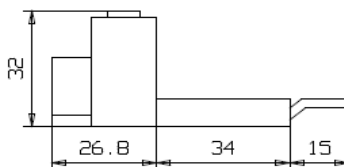
Artikel-Nr. Art.-no N° article	Farbe Colour Couleur	GTIN-Code 4046931...	(Anschluss) Querschnitt (Connecting)Cross section Coupe transversale	Phasen Phase Phase	VPE Pack. Emballage	Cu/CuZn Zahl Cu/CuZn Code Cu/CuZn Codé
		[GTIN-13]	[Cu / mm ²]	[1...4]	[Unit]	[kg]
60.011-U15.100		220939	50	1	3	0,022

Einspeiseklemme 50mm², Stift

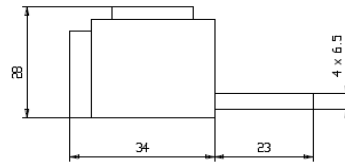
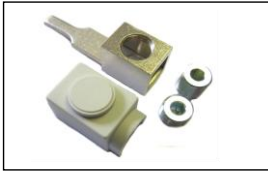
Artikel-Nr. Art.-no N° article	Farbe Colour Couleur	GTIN-Code 4046931...	(Anschluss) Querschnitt (Connecting)Cross section Coupe transversale	Phasen Phase Phase	VPE Pack. Emballage	Cu/CuZn Zahl Cu/CuZn Code Cu/CuZn Codé
		[GTIN-13]	[Cu / mm ²]	[1...4]	[Unit]	[kg]
60.011-UB29,5.100		220946	50	1	3	0,032

Einspeiseklemme 50mm², Stift

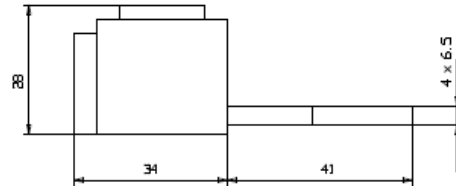
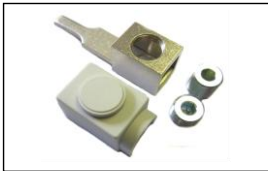
Artikel-Nr. Art.-no N° article	Farbe Colour Couleur	GTIN-Code 4046931...	(Anschluss) Querschnitt (Connecting)Cross section Coupe transversale	Phasen Phase Phase	VPE Pack. Emballage	Cu/CuZn Zahl Cu/CuZn Code Cu/CuZn Codé
		[GTIN-13]	[Cu / mm ²]	[1...4]	[Unit]	[kg]
EKU60.080.100		220953	50	1	3	0,030

Einspeiseklemme 50mm², Stift
entspricht UL489

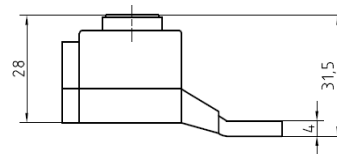
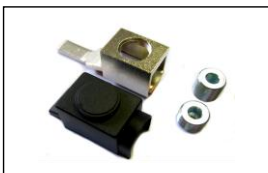
Artikel-Nr. Art.-no N° article	Farbe Colour Couleur	GTIN-Code 4046931...	(Anschluss) Querschnitt (Connecting)Cross section Coupe transversale	Phasen Phase Phase	VPE Pack. Emballage	Cu/CuZn Zahl Cu/CuZn Code Cu/CuZn Codé
		[GTIN-13]	[Cu / mm ²]	[1...4]	[Unit]	[kg]
EKU60.001.100		220960	50	1	3	0,035

Einspeiseklemme 90mm², Stift

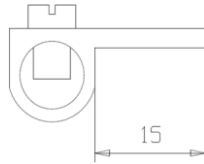
Artikel-Nr. Art.-no N° article	Farbe Colour Couleur	GTIN-Code 4046931...	(Anschluss) Querschnitt (Connecting)Cross section Coupe transversale	Phasen Phase Phase	VPE Pack. Emballage	Cu/CuZn Zahl Cu/CuZn Code Cu/CuZn Codé
		[GTIN-13]	[Cu / mm ²]	[1...4]	[Unit]	[kg]
60.040.100		220830	90	1	3 Set	0,052

Einspeiseklemme 90mm², Stift

Artikel-Nr. Art.-no N° article	Farbe Colour Couleur	GTIN-Code 4046931...	(Anschluss) Querschnitt (Connecting)Cross section Coupe transversale	Phasen Phase Phase	VPE Pack. Emballage	Cu/CuZn Zahl Cu/CuZn Code Cu/CuZn Codé
		[GTIN-13]	[Cu / mm ²]	[1...4]	[Unit]	[kg]
60.041.100		220854	90	1	3 Set	0,063

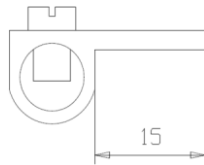
Einspeiseklemme 95mm², Stift
für Lasttrenner

Artikel-Nr. Art.-no N° article	Farbe Colour Couleur	GTIN-Code 4046931...	(Anschluss) Querschnitt (Connecting)Cross section Coupe transversale	Phasen Phase Phase	VPE Pack. Emballage	Cu/CuZn Zahl Cu/CuZn Code Cu/CuZn Codé
		[GTIN-13]	[Cu / mm ²]	[1...4]	[Unit]	[kg]
25.292.300		220861	95	1	3 Set	0,065
25.292.100		220878	95	1	3 Set	0,065



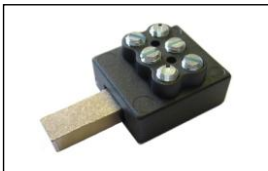
**Anschlussklemmen
für Phasenschielen unisoliert, Stift**

Artikel-Nr. Art.-no N° article	Farbe Colour Couleur	GTIN- Code 4046931...	(Anschluss) Querschnitt (Connecting)Cross section Coupe transversale	Phasen Phase Phase	VPE Pack. Emballage	Cu/CuZn Zahl Cu/CuZn Code Cu/CuZn Codé
		[GTIN-13]	[Cu / mm ²]	[1...4]	[Unit]	[kg]
60.030.000	□	221110	35	1	10	0,016



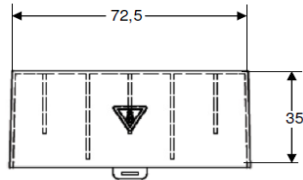
**Anschlussklemmen
für Phasenschielen unisoliert, Gabel**

Artikel-Nr. Art.-no N° article	Farbe Colour Couleur	GTIN- Code 4046931...	(Anschluss) Querschnitt (Connecting)Cross section Coupe transversale	Phasen Phase Phase	VPE Pack. Emballage	Cu/CuZn Zahl Cu/CuZn Code Cu/CuZn Codé
		[GTIN-13]	[Cu / mm ²]	[1...4]	[Unit]	[kg]
60.031.000	□	221127	35	1	10	0,016



**Zählereinspeiseklemmen
3-fach, isoliert**

Artikel-Nr. Art.-no N° article	Farbe Colour Couleur	GTIN- Code 4046931...	(Anschluss) Querschnitt (Connecting)Cross section Coupe transversale	Phasen Phase Phase	VPE Pack. Emballage	Cu/CuZn Zahl Cu/CuZn Code Cu/CuZn Codé
		[GTIN-13]	[Cu / mm ²]	[1...4]	[Unit]	[kg]
25.293.300	■	221141	3 x 16	1	3	0,028
25.293.100	■	221134	3 x 16	1	3	0,028

Berührungsschutz
für Lasttrenner

Artikel-Nr. Art.-no N° article	Farbe Colour Couleur	GTIN-Code 4046931...	(Anschluss) Querschnitt (Connecting)Cross section Coupe transversale	Phasen Phase Phase	VPE Pack. Emballage	Cu/CuZn Zahl Cu/CuZn Code Cu/CuZn Codé
		[GTIN-13]	[Cu / mm ²]	[1...4]	[Unit]	[kg]
25.001.400	■	200023	---	3	10	---

Berührungsschutz für Stift und Gabel
Modul: 17,6 bis 18,0
einzeln abtrennbar

Artikel-Nr. Art.-no N° article	Farbe Colour Couleur	GTIN-Code 4046931...	(Anschluss) Querschnitt (Connecting)Cross section Coupe transversale	Phasen Phase Phase	VPE Pack. Emballage	Cu/CuZn Zahl Cu/CuZn Code Cu/CuZn Codé
		[GTIN-13]	[Cu / mm ²]	[1...4]	[Unit]	[kg]
50.002.400	■	200016	---	1 - 4	10	---



Endkappe passend für:

1-phasig 14mm²

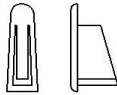
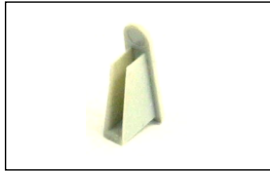
Artikel-Nr. Art.-no N° article	Farbe Colour Couleur	GTIN-Code 4046931...	(Anschluss) Querschnitt (Connecting)Cross section Coupe transversale	Phasen Phase Phase	VPE Pack. Emballage	Cu/CuZn Zahl Cu/CuZn Code Cu/CuZn Codé
		[GTIN-13]	[Cu / mm ²]	[1...4]	[Unit]	[kg]
EK008.100.100	■	200566	14	1	50	---
EK008.100.500	■	200573	14	1	50	---



Endkappe passend für:

1-phasig Hexagon

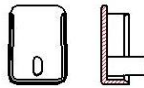
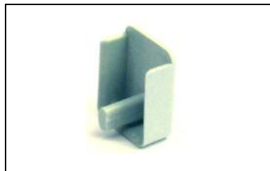
Artikel-Nr. Art.-no N° article	Farbe Colour Couleur	GTIN-Code 4046931...	(Anschluss) Querschnitt (Connecting)Cross section Coupe transversale	Phasen Phase Phase	VPE Pack. Emballage	Cu/CuZn Zahl Cu/CuZn Code Cu/CuZn Codé
		[GTIN-13]	[Cu / mm ²]	[1...4]	[Unit]	[kg]
EK009.100.100	■	200580	10	1	50	---
EK009.100.500	■	200597	10	1	50	---



Endkappe passend für:

1-phasige Phasenschiene 10mm²
1-phasige Phasenschiene 16mm²

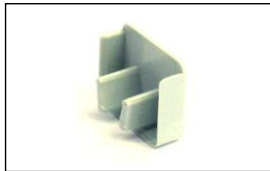
Artikel-Nr. Art.-no N° article	Farbe Colour Couleur	GTIN-Code 4046931...	(Anschluss) Querschnitt (Connecting)Cross section Coupe transversale	Phasen Phase Phase	VPE Pack. Emballage	Cu/CuZn Zahl Cu/CuZn Code Cu/CuZn Codé
		[GTIN-13]	[Cu / mm ²]	[1...4]	[Unit]	[kg]
EK002.100.100		200658	10 - 16	1	50	----
EK002.100.500		200641	10 - 16	1	50	----



Endkappe passend für:

2-phasige Phasenschiene 10mm²

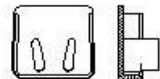
Artikel-Nr. Art.-no N° article	Farbe Colour Couleur	GTIN-Code 4046931...	(Anschluss) Querschnitt (Connecting)Cross section Coupe transversale	Phasen Phase Phase	VPE Pack. Emballage	Cu/CuZn Zahl Cu/CuZn Code Cu/CuZn Codé
		[GTIN-13]	[Cu / mm ²]	[1...4]	[Unit]	[kg]
EK000.200.100		200535	10	2	10	----



Endkappe passend für:

3-phasige Phasenschiene 10mm²

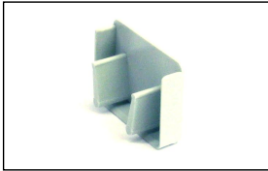
Artikel-Nr. Art.-no N° article	Farbe Colour Couleur	GTIN-Code 4046931...	(Anschluss) Querschnitt (Connecting)Cross section Coupe transversale	Phasen Phase Phase	VPE Pack. Emballage	Cu/CuZn Zahl Cu/CuZn Code Cu/CuZn Codé
		[GTIN-13]	[Cu / mm ²]	[1...4]	[Unit]	[kg]
EK000.300.100		200542	10	3	10	----



Endkappe passend für:

2-phasige Phasenschiene 16mm²
3-phasige Phasenschiene 16mm²

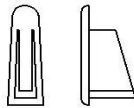
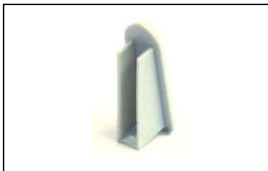
Artikel-Nr. Art.-no N° article	Farbe Colour Couleur	GTIN-Code 4046931...	(Anschluss) Querschnitt (Connecting)Cross section Coupe transversale	Phasen Phase Phase	VPE Pack. Emballage	Cu/CuZn Zahl Cu/CuZn Code Cu/CuZn Codé
		[GTIN-13]	[Cu / mm ²]	[1...4]	[Unit]	[kg]
EK002.300.100		200665	16	2 - 3	10	----



Endkappe passend für:

4-phasige Phasenschiene 10mm²
4-phasige Phasenschiene 16mm²

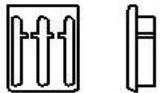
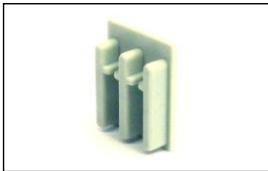
Artikel-Nr. Art.-no N° article	Farbe Colour Couleur	GTIN-Code 4046931...	(Anschluss) Querschnitt (Connecting)Cross section Coupe transversale	Phasen Phase Phase	VPE Pack. Emballage	Cu/CuZn Zahl Cu/CuZn Code Cu/CuZn Codé
		[GTIN-13]	[Cu / mm ²]	[1...4]	[Unit]	[kg]
EK002.400.100		200672	10 - 16	4	10	----



Endkappe passend für:

1-phasige Phasenschiene 28mm²
1-phasige Phasenschiene 35mm²

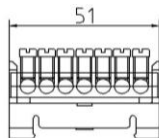
Artikel-Nr. Art.-no N° article	Farbe Colour Couleur	GTIN-Code 4046931...	(Anschluss) Querschnitt (Connecting)Cross section Coupe transversale	Phasen Phase Phase	VPE Pack. Emballage	Cu/CuZn Zahl Cu/CuZn Code Cu/CuZn Codé
		[GTIN-13]	[Cu / mm ²]	[1...4]	[Unit]	[kg]
EK006.100.100		200887	28 - 35	1	10	----



Endkappe passend für:

3-phasige Phasenschiene 28mm²
3-phasige Phasenschiene 35mm²

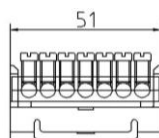
Artikel-Nr. Art.-no N° article	Farbe Colour Couleur	GTIN-Code 4046931...	(Anschluss) Querschnitt (Connecting)Cross section Coupe transversale	Phasen Phase Phase	VPE Pack. Emballage	Cu/CuZn Zahl Cu/CuZn Code Cu/CuZn Codé
		[GTIN-13]	[Cu / mm ²]	[1...4]	[Unit]	[kg]
EK006.300.100		200894	28 - 35	3	10	----



(N) Neutralleiter-Klemmen

max. Anzugsdrehmoment: 1,5 Nm

Artikel-Nr. Art.-no N° article	Farbe Colour Couleur	GTIN-Code 4046931...	(Anschluss) Querschnitt (Connecting)Cross section Coupe transversale	Phasen Phase Phase	VPE Pack. Emballage	Cu/CuZn Zahl Cu/CuZn Code Cu/CuZn Codé
		[GTIN-13]	[Cu / mm ²]	[1...4]	[Unit]	[kg]
38.107.500	Blue	209156	7 x 16	----	10	0,013
38.212.500	Blue	209163	12 x 16	----	10	0,021
38.615.500	Blue	209170	15 x 16	----	10	0,025



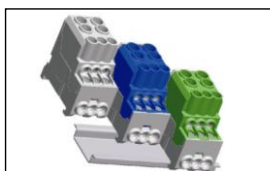
(PE) Schutzleiter-Klemmen

max. Anzugsdrehmoment: 1,5 Nm

Artikel-Nr. Art.-no N° article	Farbe Colour Couleur	GTIN-Code 4046931...	(Anschluss) Querschnitt (Connecting)Cross section Coupe transversale	Phasen Phase Phase	VPE Pack. Emballage	Cu/CuZn Zahl Cu/CuZn Code Cu/CuZn Codé
		[GTIN-13]	[Cu / mm ²]	[1...4]	[Unit]	[kg]
38.107.600	Green	209187	7 x 16	----	10	0,013
38.212.600	Green	209194	12 x 16	----	10	0,021
38.615.600	Green	209200	15 x 16	----	10	0,025

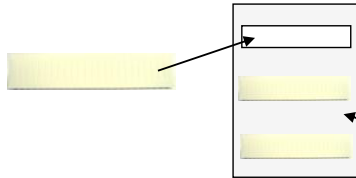
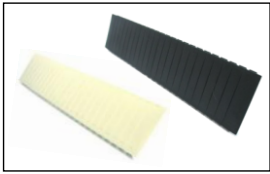
Verteilerklemme 25mm² / 10mm²

NEU!



Ausführung C (allseitig berührungsgeschützt)
Gehäuse: wahlweise lichtgrau, grün-gelb, lichtblau
Schnellmontage auf Hutschiene 35mm EN 60715 / EN 50022 vertikal und horizontal
beliebig anreihbar für mehrpolige Anwendungen

Artikel-Nr. Art.-no N° article	Farbe Colour Couleur	GTIN-Code 4046931...	Volt	(Anschluss) Querschnitt (Connecting)Cross section Coupe transversale IN / OUT	Phasen Phase Phase	Breite	Höhe	Tiefe	VPE Pack. Emballage	Cu/CuZn Zahl Cu/CuZn Code Cu/CuZn Codé
		[GTIN-13]	[AC]	[Cu / mm ²]	[1]	[mm]	[mm]	[mm]	[Unit]	[kg]
VK16.001.100	Grey	209262	690	2x25mm ² / 6x10mm ²	1	28mm	45,5mm	48mm	3	0,065
VK16.001.500	Blue	209279	690	2x25mm ² / 6x10mm ²	1	28mm	45,5mm	48mm	3	0,065
VK16.001.600	Green	209286	690	2x25mm ² / 6x10mm ²	1	28mm	45,5mm	48mm	3	0,065

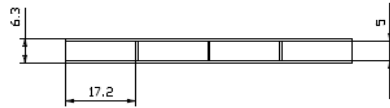
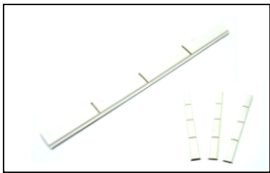


Verschlussstreifen für Verteilergehäuse

Länge: 12 TE , 1/2 Modul teilbar

Feldabdeckung
Cover
Couvre

Artikel-Nr. Art.-no N° article	Farbe Colour Couleur	GTIN-Code 4046931...	(Anschluss) Querschnitt (Connecting)Cross section Coupe transversale	Phasen Phase Phase	VPE Pack. Emballage	Cu/CuZn Zahl Cu/CuZn Code Cu/CuZn Codé
		[GTIN-13]	[Cu / mm ²]	[1...4]	[Unit]	[kg]
ADS098.012.100	■	201020	----	----	10	----
ADS098.012.200	□	201037	----	----	10	----
ADS098.012.300	■	201044	----	----	10	----

Bezeichnungstreifen für
Sicherungsautomaten und
Blitzschutzgeräte

Artikel-Nr. Art.-no N° article	Farbe Colour Couleur	GTIN-Code 4046931...	(Anschluss) Querschnitt (Connecting)Cross section Coupe transversale	Phasen Phase Phase	VPE Pack. Emballage	Cu/CuZn Zahl Cu/CuZn Code Cu/CuZn Codé
		[GTIN-13]	[Cu / mm ²]	[1...4]	[Unit]	[kg]
BZ099.001200	□	201013	----	----	10	----