



Feed In terminals

Seite 61



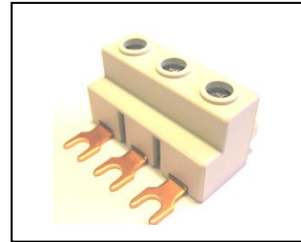
Brass-Feed In terminals

Seite 67



Feed-in terminal triple

Page 67



Feed-in terminal block for motor-protection-switch

Page 60



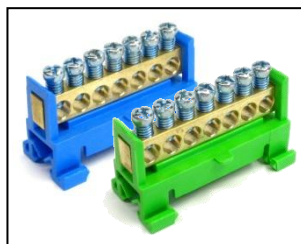
Protection cover for three phase current blocks

Page 60



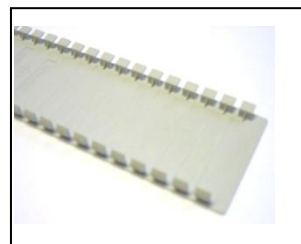
Protection cover for Pin and Fork MCB's Modul: 17,6 ... 18,0

Page 68



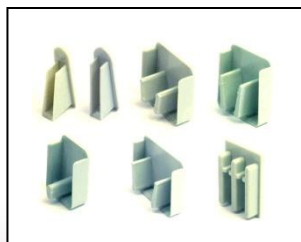
(N) Neutral- (PE) Earth-Terminal

Page 71



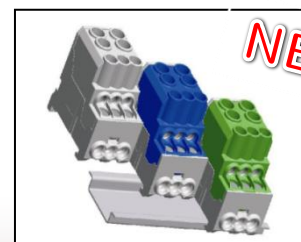
Blanking plate for enclosures

Page 72



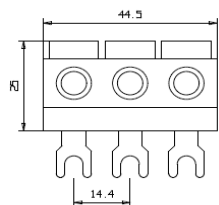
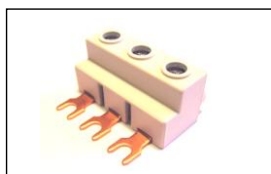
End-Caps

Page 69



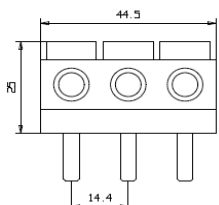
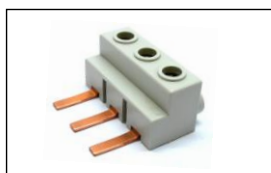
Distribution terminal blocks

Page 71



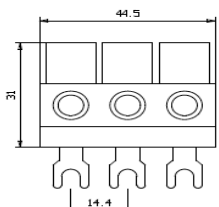
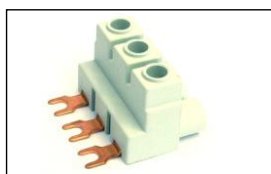
Feed-in terminal block for motor-protection-switch, Fork

Artikel-Nr. Art.-no N° article	Farbe Colour Couleur	GTIN-Code 4046931...	(Anschluss) Querschnitt (Connecting)Cross section Coupe transversale	Phasen Phase Phase	VPE Pack. Emballage	Cu/CuZn Zahl Cu/CuZn Code Cu/CuZn Codé
		[GTIN-13]	[Cu / mm ²]	[1...4]	[Unit]	[kg]
01.116.100		023929	3 x 25	3	10	0,025



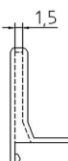
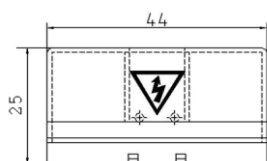
Feed-in terminal block for motor-protection-switch, Pin

Artikel-Nr. Art.-no N° article	Farbe Colour Couleur	GTIN-Code 4046931...	(Anschluss) Querschnitt (Connecting)Cross section Coupe transversale	Phasen Phase Phase	VPE Pack. Emballage	Cu/CuZn Zahl Cu/CuZn Code Cu/CuZn Codé
		[GTIN-13]	[Cu / mm ²]	[1...4]	[Unit]	[kg]
02.116.100		023936	3 x 25	3	10	0,025

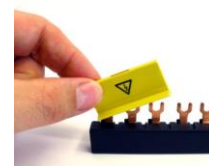


Feed-in terminal block for motor-protection-switch according to UL 508

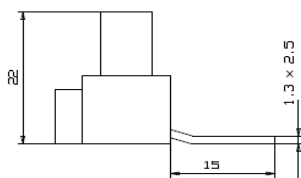
Artikel-Nr. Art.-no N° article	Farbe Colour Couleur	GTIN-Code 4046931...	(Anschluss) Querschnitt (Connecting)Cross section Coupe transversale	Phasen Phase Phase	VPE Pack. Emballage	Cu/CuZn Zahl Cu/CuZn Code Cu/CuZn Codé
		[GTIN-13]	[Cu / mm ²]	[1...4]	[Unit]	[kg]
01.115.100		023943	3 x 25	3	10	0,025



Protection cover for three phase current blocks

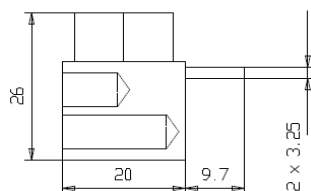


Artikel-Nr. Art.-no N° article	Farbe Colour Couleur	GTIN-Code 4046931...	(Anschluss) Querschnitt (Connecting)Cross section Coupe transversale	Phasen Phase Phase	VPE Pack. Emballage	Cu/CuZn Zahl Cu/CuZn Code Cu/CuZn Codé
		[GTIN-13]	[Cu / mm ²]	[1...4]	[Unit]	[kg]
01.001.401		023950	---	3	10	---



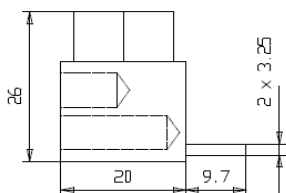
Feed-in terminal 10mm², Pin

Artikel-Nr. Art.-no N° article	Farbe Colour Couleur	GTIN-Code 4046931...	(Anschluss) Querschnitt (Connecting)Cross section Coupe transversale	Phasen Phase Phase	VPE Pack. Emballage	Cu/CuZn Zahl Cu/CuZn Code Cu/CuZn Codé
		[GTIN-13]	[Cu / mm²]	[1...4]	[Unit]	[kg]
60.005.100	■	220724	10	1	10	0,016



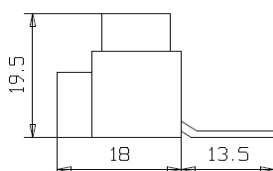
Feed-in terminal 2 x 10mm², Pin

Artikel-Nr. Art.-no N° article	Farbe Colour Couleur	GTIN-Code 4046931...	(Anschluss) Querschnitt (Connecting)Cross section Coupe transversale	Phasen Phase Phase	VPE Pack. Emballage	Cu/CuZn Zahl Cu/CuZn Code Cu/CuZn Codé
		[GTIN-13]	[Cu / mm²]	[1...4]	[Unit]	[kg]
60.020.100	■	220731	2 x 10	1	10	0,018



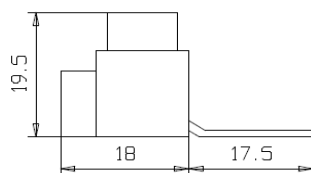
Feed-in terminal 2 x 10mm², Pin

Artikel-Nr. Art.-no N° article	Farbe Colour Couleur	GTIN-Code 4046931...	(Anschluss) Querschnitt (Connecting)Cross section Coupe transversale	Phasen Phase Phase	VPE Pack. Emballage	Cu/CuZn Zahl Cu/CuZn Code Cu/CuZn Codé
		[GTIN-13]	[Cu / mm²]	[1...4]	[Unit]	[kg]
60.021.100	■	220748	2 x 10	1	10	0,018



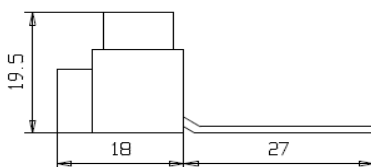
Feed-in terminal 25mm², Pin

Artikel-Nr. Art.-no N° article	Farbe Colour Couleur	GTIN-Code 4046931...	(Anschluss) Querschnitt (Connecting)Cross section Coupe transversale	Phasen Phase Phase	VPE Pack. Emballage	Cu/CuZn Zahl Cu/CuZn Code Cu/CuZn Codé
		[GTIN-13]	[Cu / mm²]	[1...4]	[Unit]	[kg]
60.001.100	■	220755	25	1	10	0,017



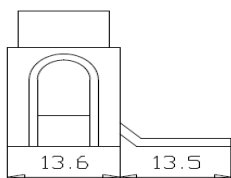
Feed-in terminal 25mm², Pin

Artikel-Nr. Art.-no N° article	Farbe Colour Couleur	GTIN-Code 4046931...	(Anschluss) Querschnitt (Connecting)Cross section Coupe transversale	Phasen Phase Phase	VPE Pack. Emballage	Cu/CuZn Zahl Cu/CuZn Code Cu/CuZn Codé
		[GTIN-13]	[Cu / mm ²]	[1...4]	[Unit]	[kg]
60.004.100	■	220762	25	1	10	0,017



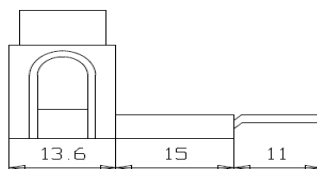
Feed-in terminal 25mm², Pin

Artikel-Nr. Art.-no N° article	Farbe Colour Couleur	GTIN-Code 4046931...	(Anschluss) Querschnitt (Connecting)Cross section Coupe transversale	Phasen Phase Phase	VPE Pack. Emballage	Cu/CuZn Zahl Cu/CuZn Code Cu/CuZn Codé
		[GTIN-13]	[Cu / mm ²]	[1...4]	[Unit]	[kg]
60.003.100	■	220779	25	1	10	0,019



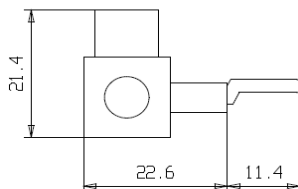
Feed-in terminal 25mm², Pin, short

Artikel-Nr. Art.-no N° article	Farbe Colour Couleur	GTIN-Code 4046931...	(Anschluss) Querschnitt (Connecting)Cross section Coupe transversale	Phasen Phase Phase	VPE Pack. Emballage	Cu/CuZn Zahl Cu/CuZn Code Cu/CuZn Codé
		[GTIN-13]	[Cu / mm ²]	[1...4]	[Unit]	[kg]
EK60.015.100	■	220786	25	1	10	0,023



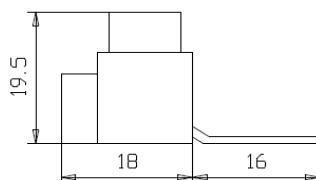
Feed-in terminal 25mm², Pin, long

Artikel-Nr. Art.-no N° article	Farbe Colour Couleur	GTIN-Code 4046931...	(Anschluss) Querschnitt (Connecting)Cross section Coupe transversale	Phasen Phase Phase	VPE Pack. Emballage	Cu/CuZn Zahl Cu/CuZn Code Cu/CuZn Codé
		[GTIN-13]	[Cu / mm ²]	[1...4]	[Unit]	[kg]
EK60.014.100	■	220793	25	1	10	0,030



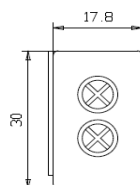
Feed-in terminal 25mm², Pin

Artikel-Nr. Art.-no N° article	Farbe Colour Couleur	GTIN-Code 4046931...	(Anschluss) Querschnitt (Connecting)Cross section Coupe transversale	Phasen Phase Phase	VPE Pack. Emballage	Cu/CuZn Zahl Cu/CuZn Code Cu/CuZn Codé
		[GTIN-13]	[Cu / mm²]	[1...4]	[Unit]	[kg]
60.008.100	■	220809	25	1	10	0,010



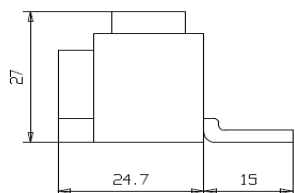
Feed-in terminal 25mm², Fork

Artikel-Nr. Art.-no N° article	Farbe Colour Couleur	GTIN-Code 4046931...	(Anschluss) Querschnitt (Connecting)Cross section Coupe transversale	Phasen Phase Phase	VPE Pack. Emballage	Cu/CuZn Zahl Cu/CuZn Code Cu/CuZn Codé
		[GTIN-13]	[Cu / mm²]	[1...4]	[Unit]	[kg]
50.002.100	■	220816	25	1	10	0,016



Feed-in terminal 35mm², Pin and Fork, pluggable

Artikel-Nr. Art.-no N° article	Farbe Colour Couleur	GTIN-Code 4046931...	(Anschluss) Querschnitt (Connecting)Cross section Coupe transversale	Phasen Phase Phase	VPE Pack. Emballage	Cu/CuZn Zahl Cu/CuZn Code Cu/CuZn Codé
		[GTIN-13]	[Cu / mm²]	[1...4]	[Unit]	[kg]
50.006.100	■	220823	35	1 - 4	10	0,020



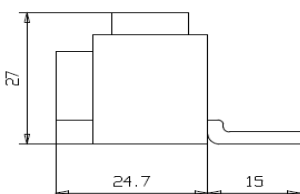
Feed-in terminal 50mm², Fork

Artikel-Nr. Art.-no N° article	Farbe Colour Couleur	GTIN-Code 4046931...	(Anschluss) Querschnitt (Connecting)Cross section Coupe transversale	Phasen Phase Phase	VPE Pack. Emballage	Cu/CuZn Zahl Cu/CuZn Code Cu/CuZn Codé
		[GTIN-13]	[Cu / mm²]	[1...4]	[Unit]	[kg]
50.011-V15.100	■	220885	50	1	3	0,022



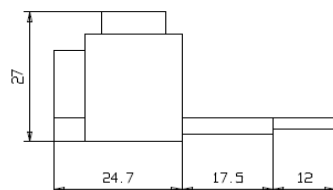
Feed-in terminal 50mm², Fork

Artikel-Nr. Art.-no N° article	Farbe Colour Couleur	GTIN-Code 4046931...	(Anschluss) Querschnitt (Connecting)Cross section Coupe transversale	Phasen Phase Phase	VPE Pack. Emballage	Cu/CuZn Zahl Cu/CuZn Code Cu/CuZn Codé
		[GTIN-13]	[Cu / mm ²]	[1...4]	[Unit]	[kg]
50.011-V29.100	■	220892	50	1	3	0,032



Feed-in terminal 50mm², Pin

Artikel-Nr. Art.-no N° article	Farbe Colour Couleur	GTIN-Code 4046931...	(Anschluss) Querschnitt (Connecting)Cross section Coupe transversale	Phasen Phase Phase	VPE Pack. Emballage	Cu/CuZn Zahl Cu/CuZn Code Cu/CuZn Codé
		[GTIN-13]	[Cu / mm ²]	[1...4]	[Unit]	[kg]
60.011-V15.100	■	220908	50	1	3	0,022



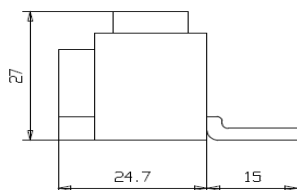
Feed-in terminal 50mm², Pin

Artikel-Nr. Art.-no N° article	Farbe Colour Couleur	GTIN-Code 4046931...	(Anschluss) Querschnitt (Connecting)Cross section Coupe transversale	Phasen Phase Phase	VPE Pack. Emballage	Cu/CuZn Zahl Cu/CuZn Code Cu/CuZn Codé
		[GTIN-13]	[Cu / mm ²]	[1...4]	[Unit]	[kg]
60.011-VB29,5.100	■	220915	50	1	3	0,032



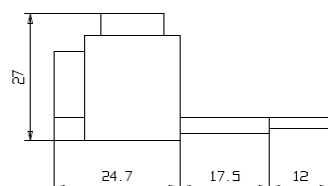
Feed-in terminal 50mm², Fork

Artikel-Nr. Art.-no N° article	Farbe Colour Couleur	GTIN-Code 4046931...	(Anschluss) Querschnitt (Connecting)Cross section Coupe transversale	Phasen Phase Phase	VPE Pack. Emballage	Cu/CuZn Zahl Cu/CuZn Code Cu/CuZn Codé
		[GTIN-13]	[Cu / mm ²]	[1...4]	[Unit]	[kg]
50.011-U15.100	■	220922	50	1	3	0,022



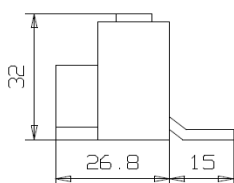
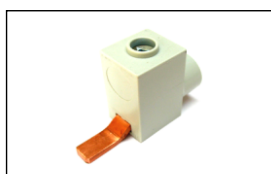
Feed-in terminal 50mm², Pin

Artikel-Nr. Art.-no N° article	Farbe Colour Couleur	GTIN-Code 4046931...	(Anschluss) Querschnitt (Connecting)Cross section Coupe transversale	Phasen Phase Phase	VPE Pack. Emballage	Cu/CuZn Zahl Cu/CuZn Code Cu/CuZn Codé
		[GTIN-13]	[Cu / mm ²]	[1...4]	[Unit]	[kg]
60.011-U15.100		220939	50	1	3	0,022



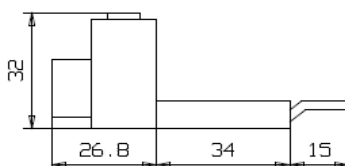
Feed-in terminal 50mm², Pin isolated

Artikel-Nr. Art.-no N° article	Farbe Colour Couleur	GTIN-Code 4046931...	(Anschluss) Querschnitt (Connecting)Cross section Coupe transversale	Phasen Phase Phase	VPE Pack. Emballage	Cu/CuZn Zahl Cu/CuZn Code Cu/CuZn Codé
		[GTIN-13]	[Cu / mm ²]	[1...4]	[Unit]	[kg]
60.011-UB29,5.100		220946	50	1	3	0,032



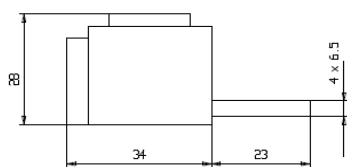
Feed-in terminal 50mm², Pin

Artikel-Nr. Art.-no N° article	Farbe Colour Couleur	GTIN-Code 4046931...	(Anschluss) Querschnitt (Connecting)Cross section Coupe transversale	Phasen Phase Phase	VPE Pack. Emballage	Cu/CuZn Zahl Cu/CuZn Code Cu/CuZn Codé
		[GTIN-13]	[Cu / mm ²]	[1...4]	[Unit]	[kg]
EKU60.080.100		220953	50	1	3	0,030



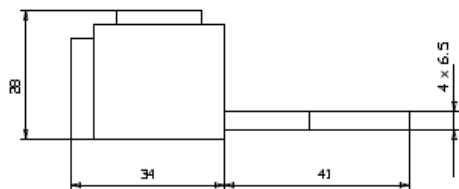
Feed-in terminal 50mm², Pin conform to UL489

Artikel-Nr. Art.-no N° article	Farbe Colour Couleur	GTIN-Code 4046931...	(Anschluss) Querschnitt (Connecting)Cross section Coupe transversale	Phasen Phase Phase	VPE Pack. Emballage	Cu/CuZn Zahl Cu/CuZn Code Cu/CuZn Codé
		[GTIN-13]	[Cu / mm ²]	[1...4]	[Unit]	[kg]
EKU60.001.100		220960	50	1	3	0,035



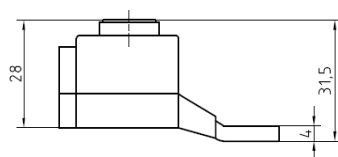
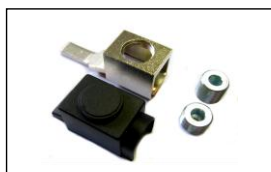
Feed-in terminal 90mm², Pin

Artikel-Nr. Art.-no N° article	Farbe Colour Couleur	GTIN-Code 4046931...	(Anschluss) Querschnitt (Connecting)Cross section Coupe transversale	Phasen Phase Phase	VPE Pack. Emballage	Cu/CuZn Zahl Cu/CuZn Code Cu/CuZn Codé
		[GTIN-13]	[Cu / mm ²]	[1...4]	[Unit]	[kg]
60.040.100		220830	90	1	3 Set	0,052



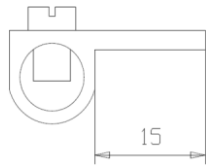
Feed-in terminal 90mm², Pin

Artikel-Nr. Art.-no N° article	Farbe Colour Couleur	GTIN-Code 4046931...	(Anschluss) Querschnitt (Connecting)Cross section Coupe transversale	Phasen Phase Phase	VPE Pack. Emballage	Cu/CuZn Zahl Cu/CuZn Code Cu/CuZn Codé
		[GTIN-13]	[Cu / mm ²]	[1...4]	[Unit]	[kg]
60.041.100		220854	90	1	3 Set	0,063



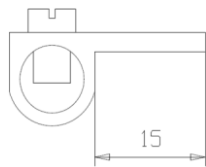
Feed-in terminal 95mm², Pin
for load-switch

Artikel-Nr. Art.-no N° article	Farbe Colour Couleur	GTIN-Code 4046931...	(Anschluss) Querschnitt (Connecting)Cross section Coupe transversale	Phasen Phase Phase	VPE Pack. Emballage	Cu/CuZn Zahl Cu/CuZn Code Cu/CuZn Codé
		[GTIN-13]	[Cu / mm ²]	[1...4]	[Unit]	[kg]
25.292.300		220861	95	1	3 Set	0,065
25.292.100		220878	95	1	3 Set	0,065



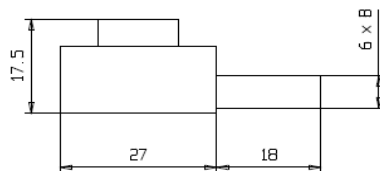
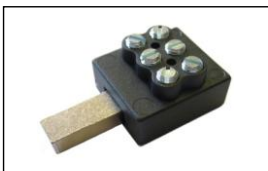
Connection terminal
for busbars not insulated, Pin

Artikel-Nr. Art.-no N° article	Farbe Colour Couleur	GTIN-Code 4046931...	(Anschluss) Querschnitt (Connecting)Cross section Coupe transversale	Phasen Phase Phase	VPE Pack. Emballage	Cu/CuZn Zahl Cu/CuZn Code Cu/CuZn Codé
		[GTIN-13]	[Cu / mm ²]	[1...4]	[Unit]	[kg]
60.030.000	<input type="checkbox"/>	221110	35	1	10	0,016



Connection terminal
for busbars not insulated, Fork

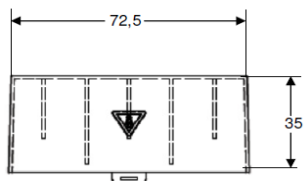
Artikel-Nr. Art.-no N° article	Farbe Colour Couleur	GTIN-Code 4046931...	(Anschluss) Querschnitt (Connecting)Cross section Coupe transversale	Phasen Phase Phase	VPE Pack. Emballage	Cu/CuZn Zahl Cu/CuZn Code Cu/CuZn Codé
		[GTIN-13]	[Cu / mm ²]	[1...4]	[Unit]	[kg]
60.031.000	<input type="checkbox"/>	221127	35	1	10	0,016



Electricity meter feed-in terminal
triple, isolated

Artikel-Nr. Art.-no N° article	Farbe Colour Couleur	GTIN-Code 4046931...	(Anschluss) Querschnitt (Connecting)Cross section Coupe transversale	Phasen Phase Phase	VPE Pack. Emballage	Cu/CuZn Zahl Cu/CuZn Code Cu/CuZn Codé
		[GTIN-13]	[Cu / mm ²]	[1...4]	[Unit]	[kg]
25.293.300	<input type="checkbox"/>	221141	3 x 16	1	3	0,028
25.293.100	<input type="checkbox"/>	221134	3 x 16	1	3	0,028

Accessoires



Protection cover for
for load-switch

Artikel-Nr. Art.-no N° article	Farbe Colour Couleur	GTIN- Code 4046931...	(Anschluss) Querschnitt (Connecting)Cross section Coupe transversale	Phasen Phase Phase	VPE Pack. Emballage	Cu/CuZn Zahl Cu/CuZn Code Cu/CuZn Codé
		[GTIN-13]	[Cu / mm ²]	[1...4]	[Unit]	[kg]
25.001.400	Yellow	200023	---	3	10	---



Protection cover for Pin and Fork
Modul: 17,6 ... 18,0
einzeln abtrennbar



Artikel-Nr. Art.-no N° article	Farbe Colour Couleur	GTIN- Code 4046931...	(Anschluss) Querschnitt (Connecting)Cross section Coupe transversale	Phasen Phase Phase	VPE Pack. Emballage	Cu/CuZn Zahl Cu/CuZn Code Cu/CuZn Codé
		[GTIN-13]	[Cu / mm ²]	[1...4]	[Unit]	[kg]
50.002.400	Grey	200016	---	1 - 4	10	---



Endcaps suitable for:

1-phase 14mm²

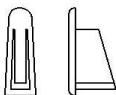
Artikel-Nr. Art.-no N° article	Farbe Colour Couleur	GTIN- Code 4046931...	(Anschluss) Querschnitt (Connecting)Cross section Coupe transversale	Phasen Phase Phase	VPE Pack. Emballage	Cu/CuZn Zahl Cu/CuZn Code Cu/CuZn Codé
		[GTIN-13]	[Cu / mm ²]	[1...4]	[Unit]	[kg]
EK008.100.100	Grey	200566	14	1	50	---
EK008.100.500	Blue	200573	14	1	50	---



Endcaps suitable for:

1-phase hexagon

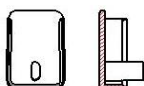
Artikel-Nr. Art.-no N° article	Farbe Colour Couleur	GTIN- Code 4046931...	(Anschluss) Querschnitt (Connecting)Cross section Coupe transversale	Phasen Phase Phase	VPE Pack. Emballage	Cu/CuZn Zahl Cu/CuZn Code Cu/CuZn Codé
		[GTIN-13]	[Cu / mm ²]	[1...4]	[Unit]	[kg]
EK009.100.100	Grey	200580	10	1	50	---
EK009.100.500	Blue	200597	10	1	50	---



Endcaps suitable for:

1-phase busbar 10mm²
1-phase busbar 16mm²

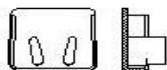
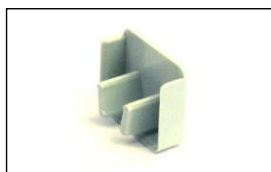
Artikel-Nr. Art.-no N° article	Farbe Colour Couleur	GTIN-Code 4046931...	(Anschluss) Querschnitt (Connecting)Cross section Coupe transversale	Phasen Phase Phase	VPE Pack. Emballage	Cu/CuZn Zahl Cu/CuZn Code Cu/CuZn Codé
		[GTIN-13]	[Cu / mm ²]	[1...4]	[Unit]	[kg]
EK002.100.100		200658	10 - 16	1	50	----
EK002.100.500		200641	10 - 16	1	50	----



Endcaps suitable for:

2-phase busbar 10mm²

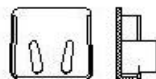
Artikel-Nr. Art.-no N° article	Farbe Colour Couleur	GTIN-Code 4046931...	(Anschluss) Querschnitt (Connecting)Cross section Coupe transversale	Phasen Phase Phase	VPE Pack. Emballage	Cu/CuZn Zahl Cu/CuZn Code Cu/CuZn Codé
		[GTIN-13]	[Cu / mm ²]	[1...4]	[Unit]	[kg]
EK000.200.100		200535	10	2	10	----



Endcaps suitable for:

3-phase busbar 10mm²

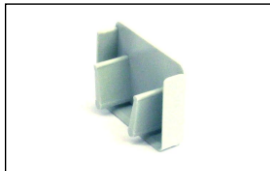
Artikel-Nr. Art.-no N° article	Farbe Colour Couleur	GTIN-Code 4046931...	(Anschluss) Querschnitt (Connecting)Cross section Coupe transversale	Phasen Phase Phase	VPE Pack. Emballage	Cu/CuZn Zahl Cu/CuZn Code Cu/CuZn Codé
		[GTIN-13]	[Cu / mm ²]	[1...4]	[Unit]	[kg]
EK000.300.100		200542	10	3	10	----



Endcaps suitable for:

2-phase busbar 16mm²
3-phase busbar 16mm²

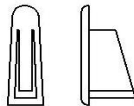
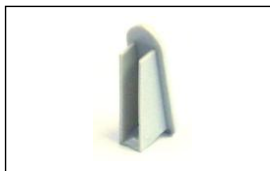
Artikel-Nr. Art.-no N° article	Farbe Colour Couleur	GTIN-Code 4046931...	(Anschluss) Querschnitt (Connecting)Cross section Coupe transversale	Phasen Phase Phase	VPE Pack. Emballage	Cu/CuZn Zahl Cu/CuZn Code Cu/CuZn Codé
		[GTIN-13]	[Cu / mm ²]	[1...4]	[Unit]	[kg]
EK002.300.100		200665	16	2 - 3	10	----



Endcaps suitable for:

4-phase busbar, 10mm²
4-phase busbar 16mm²

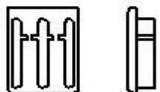
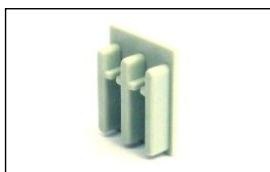
Artikel-Nr. Art.-no N° article	Farbe Colour Couleur	GTIN-Code 4046931...	(Anschluss) Querschnitt (Connecting)Cross section Coupe transversale	Phasen Phase Phase	VPE Pack. Emballage	Cu/CuZn Zahl Cu/CuZn Code Cu/CuZn Codé
		[GTIN-13]	[Cu / mm ²]	[1...4]	[Unit]	[kg]
EK002.400.100		200672	10 - 16	4	10	----



Endcaps suitable for:

1-phase busbar 28mm²
1-phase busbar 35mm²

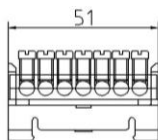
Artikel-Nr. Art.-no N° article	Farbe Colour Couleur	GTIN-Code 4046931...	(Anschluss) Querschnitt (Connecting)Cross section Coupe transversale	Phasen Phase Phase	VPE Pack. Emballage	Cu/CuZn Zahl Cu/CuZn Code Cu/CuZn Codé
		[GTIN-13]	[Cu / mm ²]	[1...4]	[Unit]	[kg]
EK006.100.100		200887	28 - 35	1	10	----



Endcaps suitable for:

3-phase busbar 28mm²
3-phase busbar 35mm²

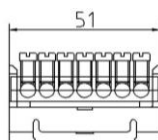
Artikel-Nr. Art.-no N° article	Farbe Colour Couleur	GTIN-Code 4046931...	(Anschluss) Querschnitt (Connecting)Cross section Coupe transversale	Phasen Phase Phase	VPE Pack. Emballage	Cu/CuZn Zahl Cu/CuZn Code Cu/CuZn Codé
		[GTIN-13]	[Cu / mm ²]	[1...4]	[Unit]	[kg]
EK006.300.100		200894	28 - 35	3	10	----



(N) Neutral-Terminal

max. starting torque: 1,5 Nm

Artikel-Nr. Art.-no N° article	Farbe Colour Couleur	GTIN-Code 4046931...	(Anschluss) Querschnitt (Connecting)Cross section Coupe transversale	Phasen Phase Phase	VPE Pack. Emballage	Cu/CuZn Zahl Cu/CuZn Code Cu/CuZn Codé
		[GTIN-13]	[Cu / mm ²]	[1...4]	[Unit]	[kg]
38.107.500		209156	7 x 16	----	10	0,013
38.212.500		209163	12 x 16	----	10	0,021
38.615.500		209170	15 x 16	----	10	0,025



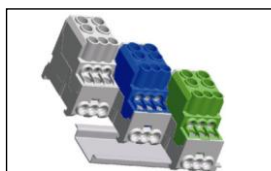
(PE) Erth-Terminal

max. starting torque: 1,5 Nm

Artikel-Nr. Art.-no N° article	Farbe Colour Couleur	GTIN-Code 4046931...	(Anschluss) Querschnitt (Connecting)Cross section Coupe transversale	Phasen Phase Phase	VPE Pack. Emballage	Cu/CuZn Zahl Cu/CuZn Code Cu/CuZn Codé
		[GTIN-13]	[Cu / mm ²]	[1...4]	[Unit]	[kg]
38.107.600		209187	7 x 16	----	10	0,013
38.212.600		209194	12 x 16	----	10	0,021
38.615.600		209200	15 x 16	----	10	0,025

Distribution terminal blocks
25mm² / 10mm²

NEW!



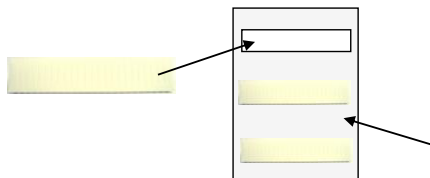
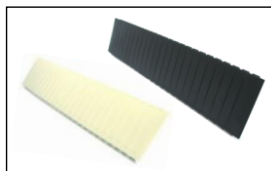
Version C (all sides touch protection)

Housing: alternatively light grey, green-yellow, light blue

Fast installation on DIN-Rail 35mm EN 60715 / EN 50022 vertical and horizontal

Optional possible to add for multipole application.

Artikel-Nr. Art.-no N° article	Farbe Colour Couleur	GTIN-Code 4046931...	Volt	(Anschluss) Querschnitt (Connecting)Cross section Coupe transversale IN / OUT	Phasen Phase Phase	Breite	Höhe	Tiefe	VPE Pack. Emballage	Cu/CuZn Zahl Cu/CuZn Code Cu/CuZn Codé
		[GTIN-13]	[AC]	[Cu / mm ²]	[1]	[mm]	[mm]	[mm]	[Unit]	[kg]
VK16.001.100		209262	690	2x25mm ² / 6x10mm ²	1	28mm	45,5mm	48mm	3	0,065
VK16.001.500		209279	690	2x25mm ² / 6x10mm ²	1	28mm	45,5mm	48mm	3	0,065
VK16.001.600		209286	690	2x25mm ² / 6x10mm ²	1	28mm	45,5mm	48mm	3	0,065

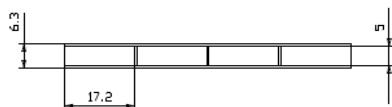
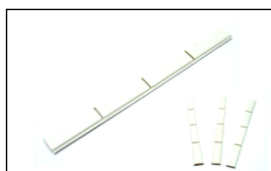


Blanking plate for enclosures

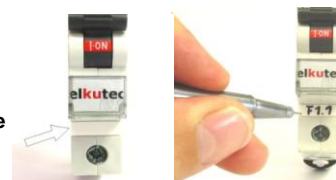
Length: 12 mod. , 1/2 mod. divisible

Cover
Feldabdeckung
Couvre

Artikel-Nr. Art.-no N° article	Farbe Colour Couleur	GTIN-Code 4046931...	(Anschluss) Querschnitt (Connecting)Cross section Coupe transversale	Phasen Phase Phase	VPE Pack. Emballage	Cu/CuZn Zahl Cu/CuZn Code Cu/CuZn Codé
		[GTIN-13]	[Cu / mm ²]	[1...4]	[Unit]	[kg]
ADS098.012.100	■	201020	---	---	10	---
ADS098.012.200	□	201037	---	---	10	---
ADS098.012.300	■	201044	---	---	10	---



Inscription shield for
Miniature-Circuit-Breaker
and Surge protective device



Artikel-Nr. Art.-no N° article	Farbe Colour Couleur	GTIN-Code 4046931...	(Anschluss) Querschnitt (Connecting)Cross section Coupe transversale	Phasen Phase Phase	VPE Pack. Emballage	Cu/CuZn Zahl Cu/CuZn Code Cu/CuZn Codé
		[GTIN-13]	[Cu / mm ²]	[1...4]	[Unit]	[kg]
BZ099.001200	□	201013	---	---	10	---